

ThreeSide Peptides
 10600 Endeavour Way Suite 3
 Largo, FL 33777



Project 135679
Lab # 132065
Date Rec'd 1/7/2026
Report Issued 1/26/2026

Project

Sample Epithalon 10 mg EP102512

Certificate of Analysis



<u>Analyte</u>	<u>Result</u>	<u>LOQ</u>	<u>Units</u>	<u>% of Label</u>	<u>Method</u>	<u>Date</u>	<u>CAS</u>
Peptide Analysis							
Chromatographic purity	>99.9	0.5	%		HPLC-UV/MS	1/22/2026	
Epithalon	8.95	0.5	mg	89.5	HPLC-UV-MS	1/22/2026	64082-79-7
Epithalon	ID Confirmed				HPLC-UV-MS	1/22/2026	

The data presented are from the analysis of the sample shown and meet Krause Analytical internal quality assurance criteria unless otherwise flagged.
 Methods shown reference current Krause Analytical SOPs
 ND - Not detected LOQ - limit of quantification
 Copyright © 2025 Krause Analytical LLC. All rights reserved.

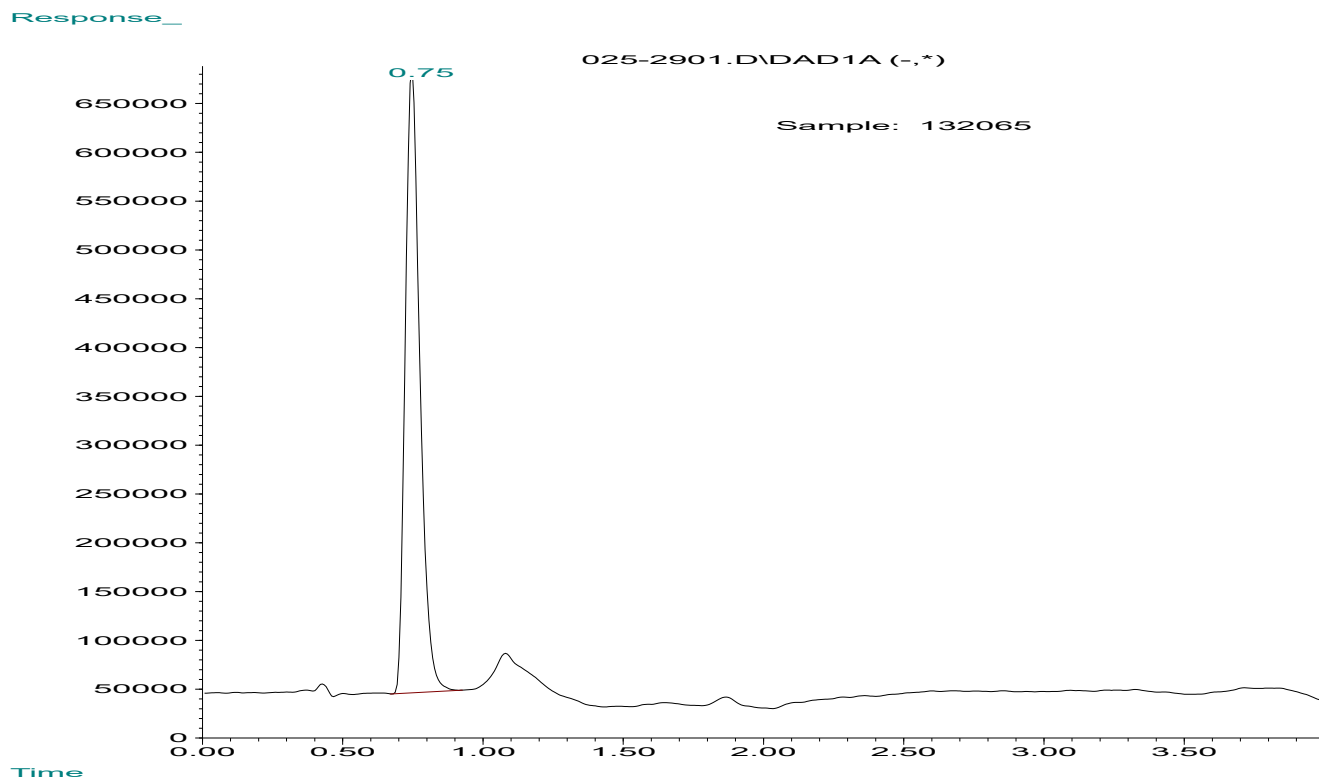
Respectfully submitted,

Mark C. Krause
 Laboratory Director



krause analytical

Chromatogram



Mass spectrum/Reference Spectrum

