

ThreeSide Peptides
 10600 Endeavour Way Suite 3
 Largo, FL 33777



Project 135679
Lab # 132079
Date Rec'd 1/7/2026
Report Issued 1/20/2026

Project

Sample PT-141 10 mg PT102512

Certificate of Analysis



<u>Analyte</u>	<u>Result</u>	<u>LOQ</u>	<u>Units</u>	<u>% of Label</u>	<u>Method</u>	<u>Date</u>	<u>CAS</u>
Peptide Analysis							
Chromatographic purity	99.68	0.5	%		HPLC-UV/MS	1/15/2026	
PT-141 (Bremelanotide)	9.71	0.5	mg	97.1	HPLC-UV-MS	1/15/2026	1607799-13-2
PT-141 (Bremelanotide)	ID Confirmed				HPLC-UV-MS	1/15/2026	

The data presented are from the analysis of the sample shown and meet Krause Analytical internal quality assurance criteria unless otherwise flagged.
 Methods shown reference current Krause Analytical SOPs
 ND - Not detected LOQ - limit of quantification
 Copyright © 2025 Krause Analytical LLC. All rights reserved.

Respectfully submitted,

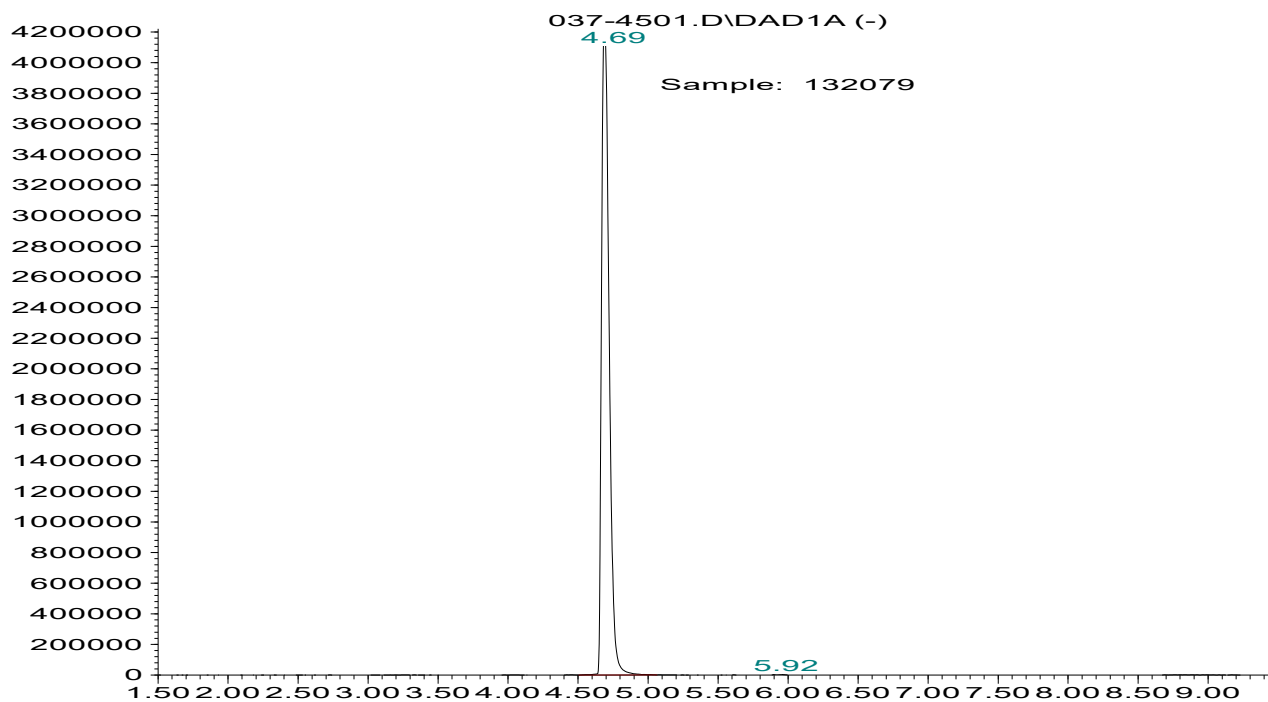
Mark C. Krause
 Laboratory Director



krause analytical

Chromatogram

Response_



Mass spectrum/Reference Spectrum

